



Welcome to the Virtual IMS user group newsletter. The Virtual IMS user group at www.fundi.com/virtualims is an independently-operated vendor-neutral site run by and for the IMS user community.

Virtual IMS user group presentation

The latest webinar from the Virtual IMS user group was entitled, "SQL to IMS". It was presented by Michael Schäfer, Senior Software Architect and Developer at Saarstahl AG, and Henry Kiesslich from Kiesslich Consulting.

Michael Schäfer is a senior software architect and developer at Saarstahl AG. In that role, he is responsible for planning many software products produced by the company. He has a background in distributed computing systems, system architecture, and data science. In 2010 he received a master of computer science. Michael currently works on machine learning with an emphasis on deep learning. Henry is an IT

Consultant specializing in IMS. He worked for 14 years with IBM (IMS Support at the backend, IMS consultant for customers, and former member of the EIAT - European IMS Architect Team), before setting up Kiesslich Consulting, an IBM Business Partner and a Fundi Business Partner.

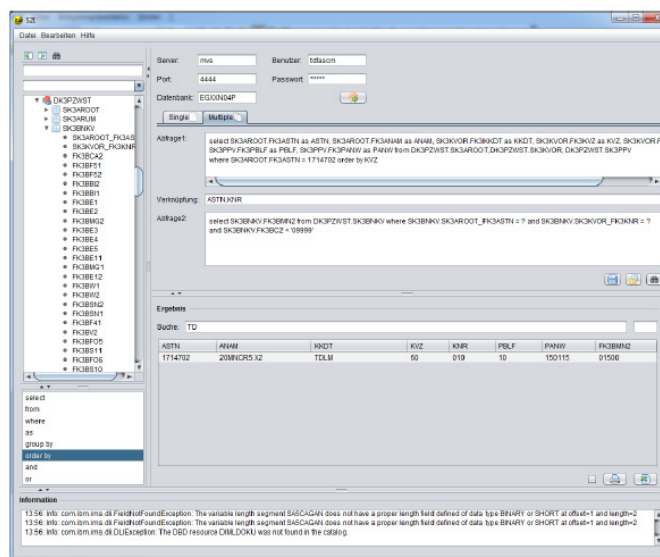
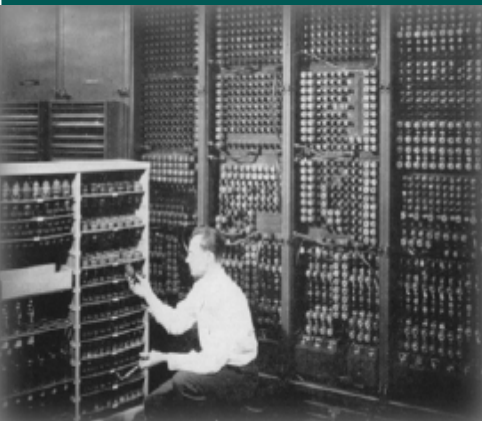


Figure 1: The S2I user interface

Contents:

Virtual IMS user group presentation	1
Meeting dates	3
Recent IMS articles	3
IMS news	3
Arcati Mainframe Yearbook	4
About the Virtual IMS user group	4



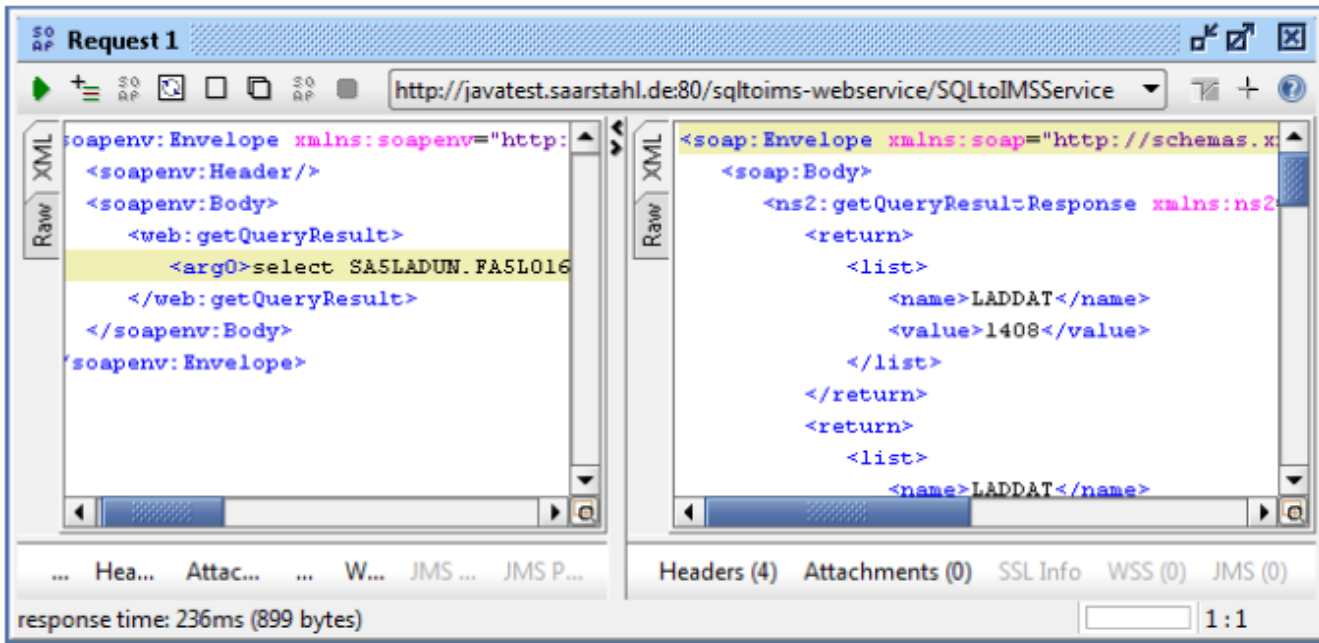


Figure 2: S2I core as a Web service

Henry introduced the session and handed over to Michael, who explained why they had developed their software. When his organization upgraded to IMS 12 they needed a new tool to browse IMS data. The developers and customers needed a tool that was easy and intuitive to use; that had everything contained in a single tool; and was usable by people with limited knowledge of computer science.

The product they came up with was S2I. Figure 1 shows the user interface. The software is a Java client for SQL queries. It handles metadata and provides a familiar environment for users.

The product can join data from several PCBs. It also

works with aliases:

```
DA5PAUFT.SA5PPOLO.
FA5PAAU=AUFTRAG
```

```
DEGPCHAR.SEGGIESS.
FEGRE2AS=GERZGEWN|
GLDGANL|FEGRE2AS
```

```
DEGPCHAR.SEGGIESS.GERZGEWN=41,6
```

```
DEGPCHAR.SEGGIESS.GLDGANL=25,1
```

There are no statements for data manipulation.

Users can search the data using regular expressions. There's an in-memory search function (model based). It provides substring and sum functionality. And it lets users export data to Excel.

S2I can act as a Web service (see Figure 2). It can also combine IMS data with other software (eg data warehouse or QlikView).

Michael Schäfer then went on to provide a demonstration of what could be done using the software.

After the demonstration, he and Henry answered user group members' questions.

A copy of Michael's presentation is available for download from the Virtual IMS user group Web site at www.fundi.com/virtualims/presentations/SQLtoIMSOct17.pdf.

You can see and hear the whole user group meeting by downloading the WMV file from www.fundi.com/virtualims/presentations/2017-10-10meeting.wmv.

Meeting dates

- On 5 December 2017, BMC Software will be discussing “GDPR and its impact on IMS recovery”.
- The following meeting will be on 6 February 2018, when IBM/Fundi Software will be discussing “Managing CICS performance and configuration using CICS PA and CM”.

Recent IMS articles

Try out IMS open access technologies with IBM Z Trial by Melanie Tang on z Systems Developer Community (23 October 2017). You can find the article at <https://developer.ibm.com/zsystems/2017/10/23/try-ims-open-access-technologies-ibm-z-trial/>

The IMS Symposium joins the IBM Z Tech University Family! by Sandy Sherrill on z Systems Developer Community (17 October 2017). You can find the article at <https://developer.ibm.com/zsystems/2017/10/17/the-ims-symposium/>

z/TPFDF data event enhancement for PUT 14 (PI86942) by Theresa Hans on z Systems Developer Community (16

October 2017). You can find the article at <https://developer.ibm.com/zsystems/2017/10/16/ztpfdf-data-event-enhancement-put-14-pi86942/>

z/TPF PUT 14 Product Documentation Updated September 2017 by B J Scheid on z Systems Developer Community (16 October 2017). You can find the article at <https://developer.ibm.com/zsystems/2017/10/16/ztpf-put-14-product-documentation-updated-september-2017/>

Preserving a User’s Identity from One Security Realm to Another with z/OS Connect EE and IMS 15 by Ylai on z Systems Developer Community (11 October 2017). You can find the article at <https://developer.ibm.com/zsystems/2017/10/11/preserving-users-identity-one-security-realm-another-zos-connect-ee-ims-15/>

Coming Soon to a Data Center Near You: IBM IMS 15! by Betty Patterson on z Systems Developer Community (3 October 2017). You can find the article at <https://developer.ibm.com/zsystems/2017/10/03/coming-soon-data-center-near-ibm-ims-15/>

You’ve Got a New Doc Buddy by Emily Siu on z Systems Developer Community (21 September 2017). You can find the article at <https://developer.ibm.com/zsystems/2017/09/21/youve-got-new-doc-buddy/>.

Easier access to IMS and IMS Explorer documentation by Ylai on z Systems Developer Community (15 September 2017). You can find the article at <https://developer.ibm.com/zsystems/2017/09/15/easier-access-ims-ims-explorer-documentation/>.

IMS Explorer for Development is now installed through “Aqua” by Ylai on z Systems Developer Community (8 September 2017). You can find the article at <https://developer.ibm.com/zsystems/2017/09/08/ims-explorer-development-now-installed-aqua/>.

IMS news

IBM has announced IMS V15, which delivers capabilities that help you:

- Confidently manage risk – IMS V15 with the IBM z14 allows z/OS data set encryption of IMS data with minimal CPU overhead and no

application changes. It also provides support for leveraging RACF password enforcement and other RACF features critical for end-to-end security in a connected mainframe environment.

- Amplify your business efficiency – IMS V15 delivers dynamic configuration of Java environment variables and options, providing better security, flexibility, and control. It also supports the tracking of JVM usage statistics, including elapsed run time, heap memory used, number of threads processed, and more. In addition, the IMS logger leverages DFSMS Media Manager, which enables the use of hardware features that maximize performance.
- Simplify system administration – reducing reliance on the IMS system definition process, simplify dynamic resource definition, and helps keep IMS trouble free.

You can find the announcement at http://www-01.ibm.com/common/ssi/ShowDoc.wss?docURL=%2Fcommon%2Fssi%2Frep_ca%2F8%2F897%2FENUS217-398%2Findex.html&lang=en&request_locale=en.

Arcati Mainframe Yearbook

How do you know what's really going on at other mainframe sites?

As a member of the Virtual IMS user group, I thought you would be interested in the the Arcati Mainframe Yearbook. Each year, it publishes a mainframe users' survey. And you can be part of that survey to tell us your opinion.

If you're prepared to give up 10 minutes of your time to complete a survey form, we will send you a free copy of the survey results when they are published in January. Your identity and company information will be treated in confidence and will not be divulged to third parties.

The annual mainframe user survey form can be found at <http://www.arcati.com/usersurvey18/>. Tell us what it's like where you work.

Like us on
Facebook



#VirtualIMS

About the Virtual IMS user group

The Virtual IMS user group was established as a way for individuals using IBM's IMS hierarchical database and transaction processing systems to exchange information, learn new techniques, and advance their skills with the product

The Web site at www.fundi.com/virtualims provides a central point for coordinating periodic meetings (which contain technically-oriented topics presented in a webinar format), and provides articles, discussions, links, and other resources of interest to IBM IMS practitioners. Anyone with an interest in IMS is welcome to join the Virtual IMS user group and share in the knowledge exchange.

To share ideas, and for further information, contact trevor@itech-ed.com.

The Virtual IMS user group is free to its members.